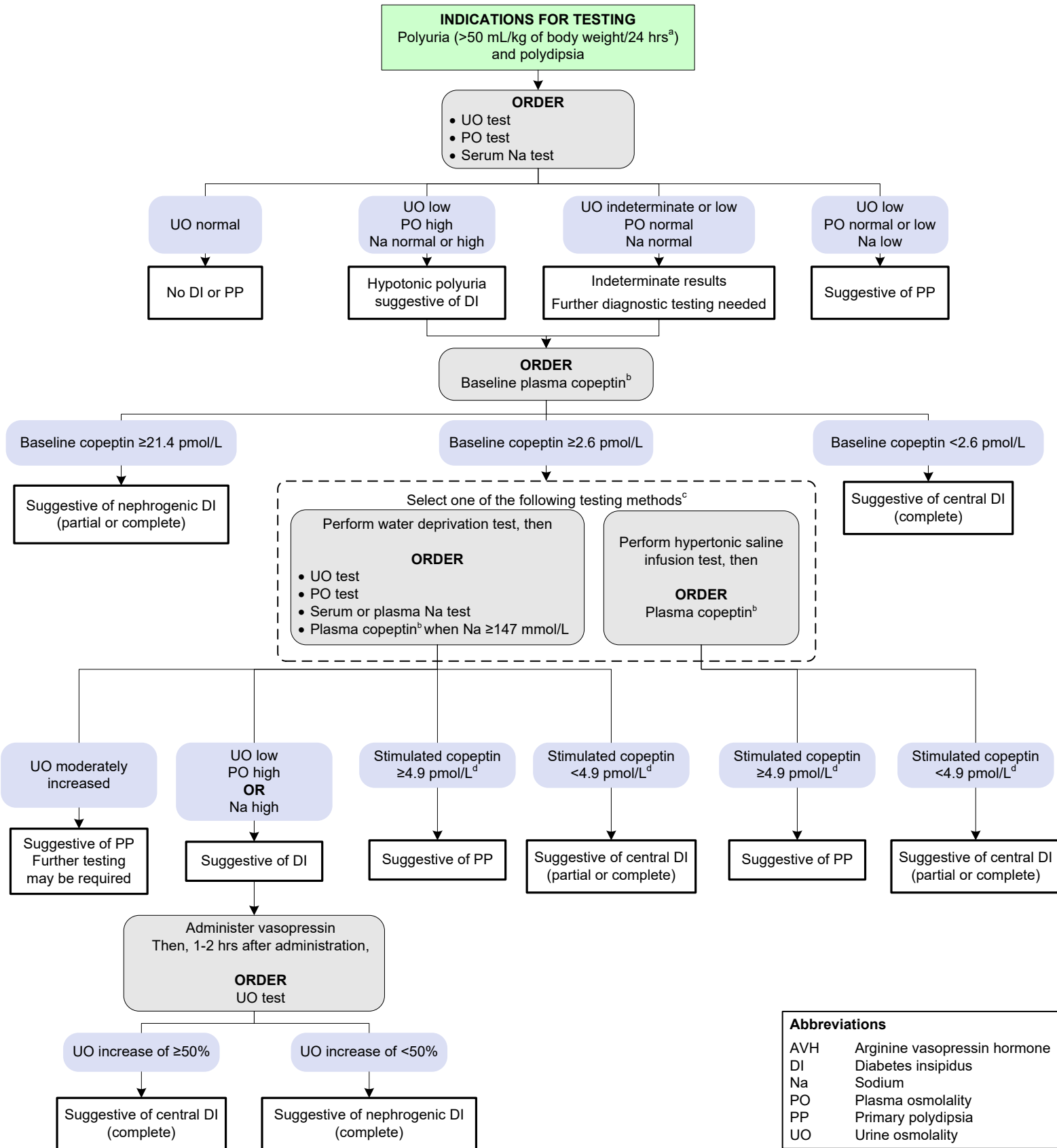


Central Diabetes Insipidus (Posterior Pituitary) Testing

[Click here for topics associated with this algorithm](#)



Abbreviations	
AVH	Arginine vasopressin hormone
DI	Diabetes insipidus
Na	Sodium
PO	Plasma osmolality
PP	Primary polydipsia
UO	Urine osmolality

^aThe noted value applies to individuals 2 yrs and older. Refer to "Diagnostic Testing for Diabetes Insipidus" for values applicable to those younger than 2 yrs (Gubbi, 2022).
^bMeasurement of copeptin (AVH surrogate) may provide useful information when diagnosis is difficult (e.g., in cases of partial central DI or partial nephrogenic DI).
^cHistorically, the water deprivation test was the standard for diagnosing DI. Recent studies suggest that plasma copeptin measurements with hypertonic saline infusion offer higher diagnostic accuracy and may replace the water deprivation test.
^dThe values and clinical interpretations of stimulated copeptin levels are based on an article in the Journal of Clinical Endocrinology and Metabolism (Timper, 2015).

References

- Christ-Crain M, Refardt J, Winzeler B. Approach to the patient: "utility of the copeptin assay." *J Clin Endocrinol Metab.* 2022;107(6):1727-1738.
- Flynn K, Hatfield J, Brown K, et al. Central and nephrogenic diabetes insipidus: updates on diagnosis and management. *Front Endocrinol (Lausanne).* 2025;15:1479764.
- Gubbi S, Hannah-Shmouni F, Koch CA, et al. Diagnostic testing for diabetes insipidus. In: Feingold KR, Anawalt B, Blackman MR, et al, eds. *Endotext*. MDText.com. Updated Nov 2022; accessed Feb 2025.
- Timper K, Fenske W, Kühn F, et al. Diagnostic accuracy of copeptin in the differential diagnosis of the polyuria-polydipsia syndrome: a prospective multicenter study. *J Clin Endocrinol Metab.* 2015;100(6):2268-2274.